

Supplementary Material

1 More Qualitative Results

Figure 1 shows more qualitative results on the KITTI validation split set. The ground-truth 3D boxes and the predicted 3D boxes of the baseline method and our DA-3Ddet are drawn in green, yellow, and red, respectively. As observed, our method can produce high-quality 3D bounding boxes in different types of scenes.

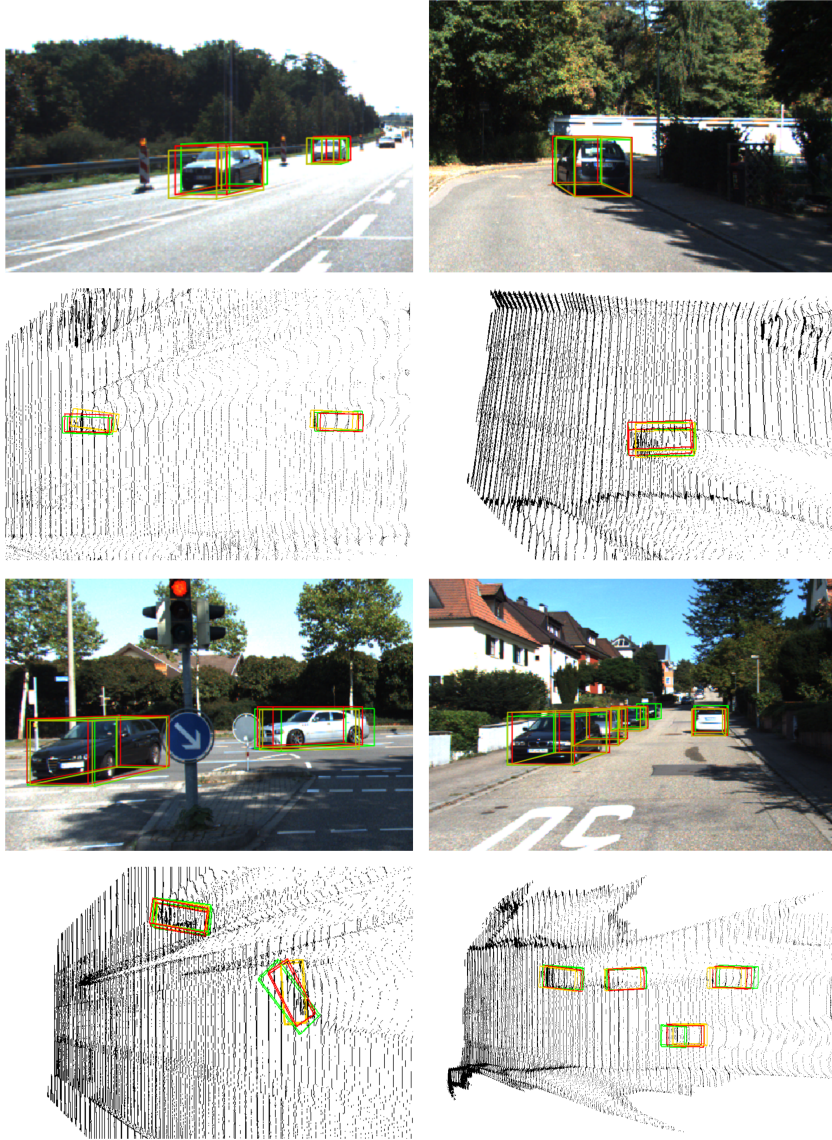


Figure 1: Visualization of the results on the KITTI validation split set. The ground-truth 3D boxes and the predicted 3D boxes of the baseline method and our method are drawn in green, yellow, and red, respectively.