

Count- and Similarity-aware R-CNN for Pedestrian Detection

Jin Xie^{1*}, Hisham Cholakkal^{2,3*}, Rao Muhammad Anwer^{2,3},
Fahad Shahbaz Khan^{2,3}, Yanwei Pang^{1**}, Ling Shao^{2,3}, and Mubarak Shah⁴

¹ Tianjin Key Laboratory of Brain-Inspired Artificial Intelligence, School of Electrical and Information Engineering, Tianjin University, China

² Mohamed bin Zayed University of Artificial Intelligence, UAE

³ Inception Institute of Artificial Intelligence, UAE

⁴ University of Central Florida, USA

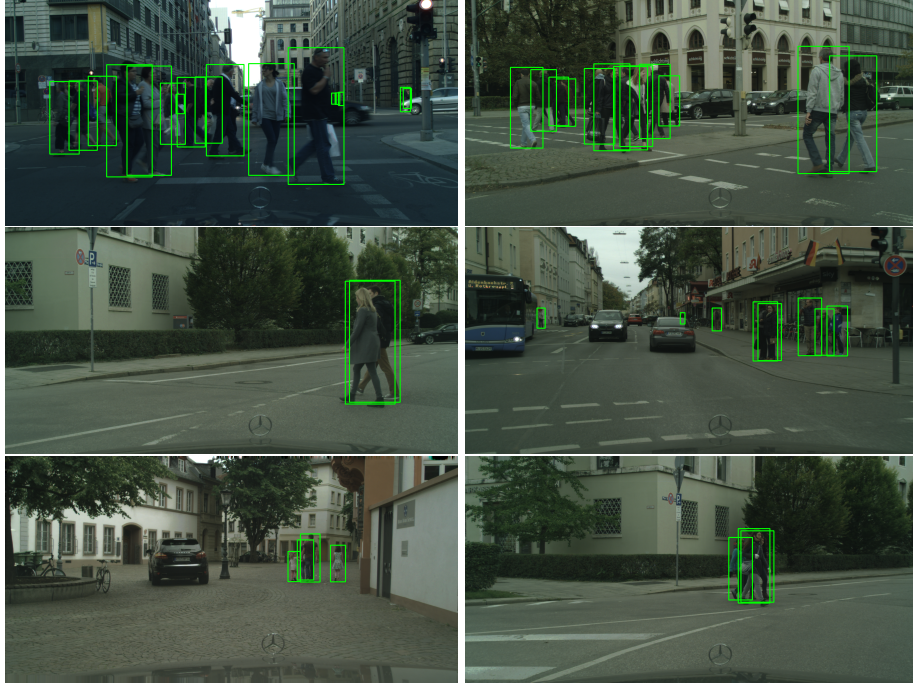


Fig. 1. Detection results of the proposed CaSe on CityPersons test set. Green rectangles represent detection results.

* The first two authors contribute equally to this work.

** Corresponding author.