

## Appendix

### A Qualitative results.

In Fig. 5 (a), we show some pseudo boxes (in yellow) with the predicted consistency  $\sigma$ . For some objects, which are missed by ground truths, pseudo boxes can accurately detect them with high  $\sigma$ . We also compare qualitative results of the supervised baseline and PseCo in Fig. 5 (b-c). It is apparent that the precision and recall of the model are significantly improved through the training on unlabeled data.

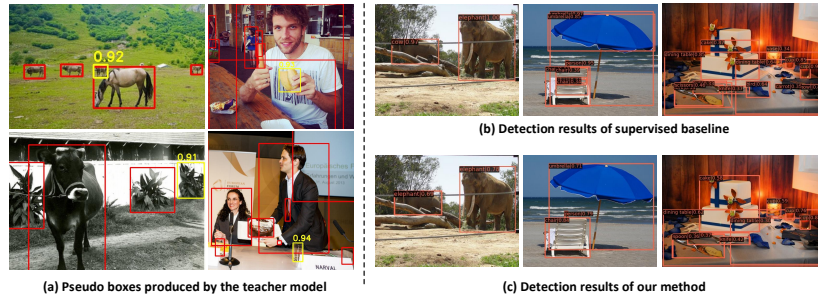


Fig. 5: (a) We visualize some pseudo boxes (in yellow), which detect objects missed by ground-truths (in red). Numbers above the pseudo box refer to the predicted consistency  $\sigma$ . (b)(c) are the results of the supervised baseline and our method.